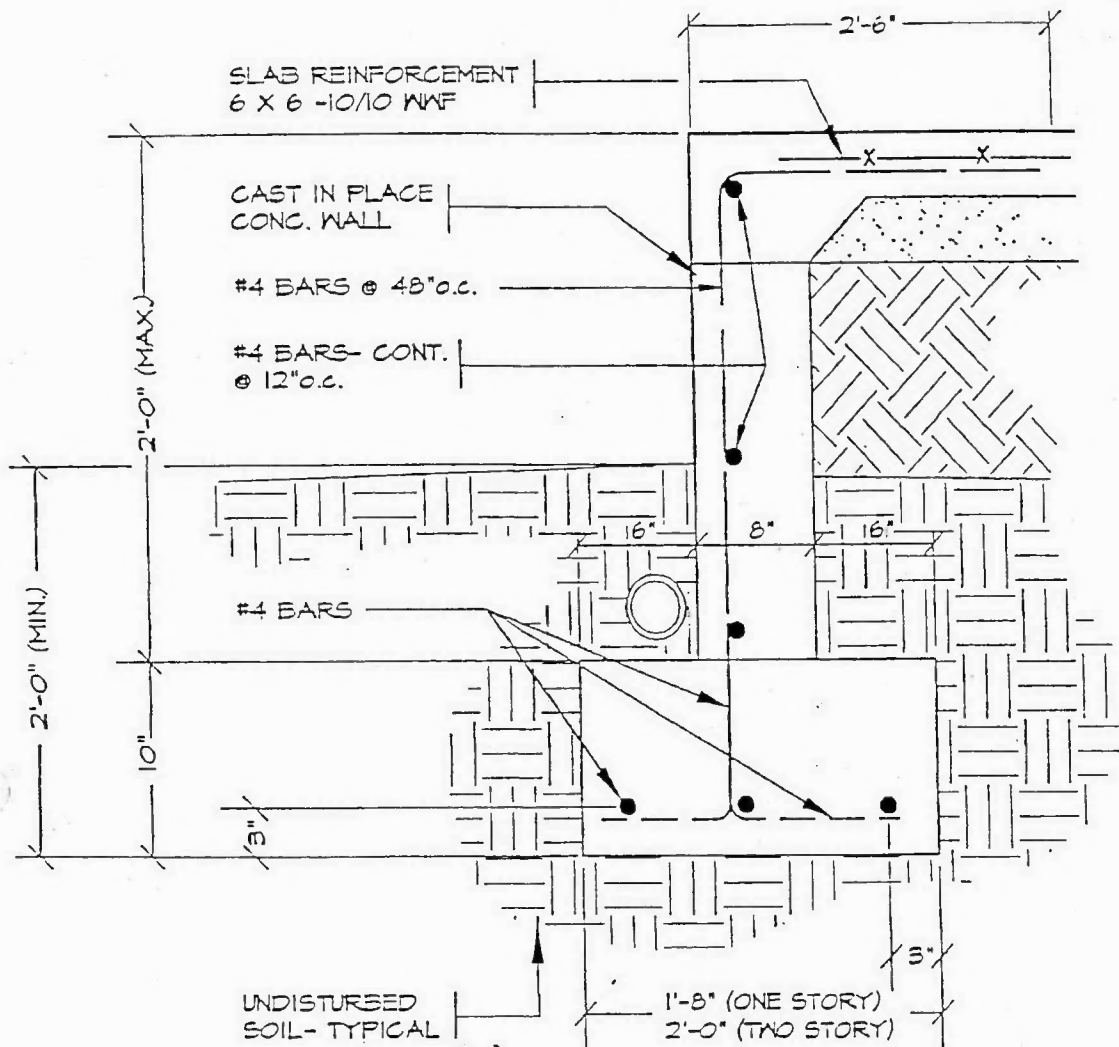
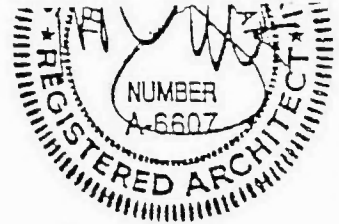


DETAIL: TYPICAL MONOLITHIC FOOTING
 SCALE: 1" = 1'-0"

Appendix B

© TREAT ARCHITECTS 2000

<p>TREAT ARCHITECTS, P.C. 114 Eagles Landing Drive Branson, Missouri 65616 417-336-2015 Fax 336-2016</p>	<p>Project: STONEBRIDGE VILLAGE</p>	<p>Sheet</p>
	<p>Drawing: FOOTING DETAILS</p>	
	<p>Date: 4/12/00</p>	<p>of Sheets</p>



DETAIL: TYPICAL STEM WALL AND SLAB (2' MAX.)

SCALE: 1" = 1'-0"

Appendix B

© TREAT ARCHITECTS 2000

TREAT ARCHITECTS, P.C.

114 Eagles Landing Drive
 Branson, Missouri 65616
 417-336-2015 Fax 336-2016

Project: **STONEBRIDGE VILLAGE**

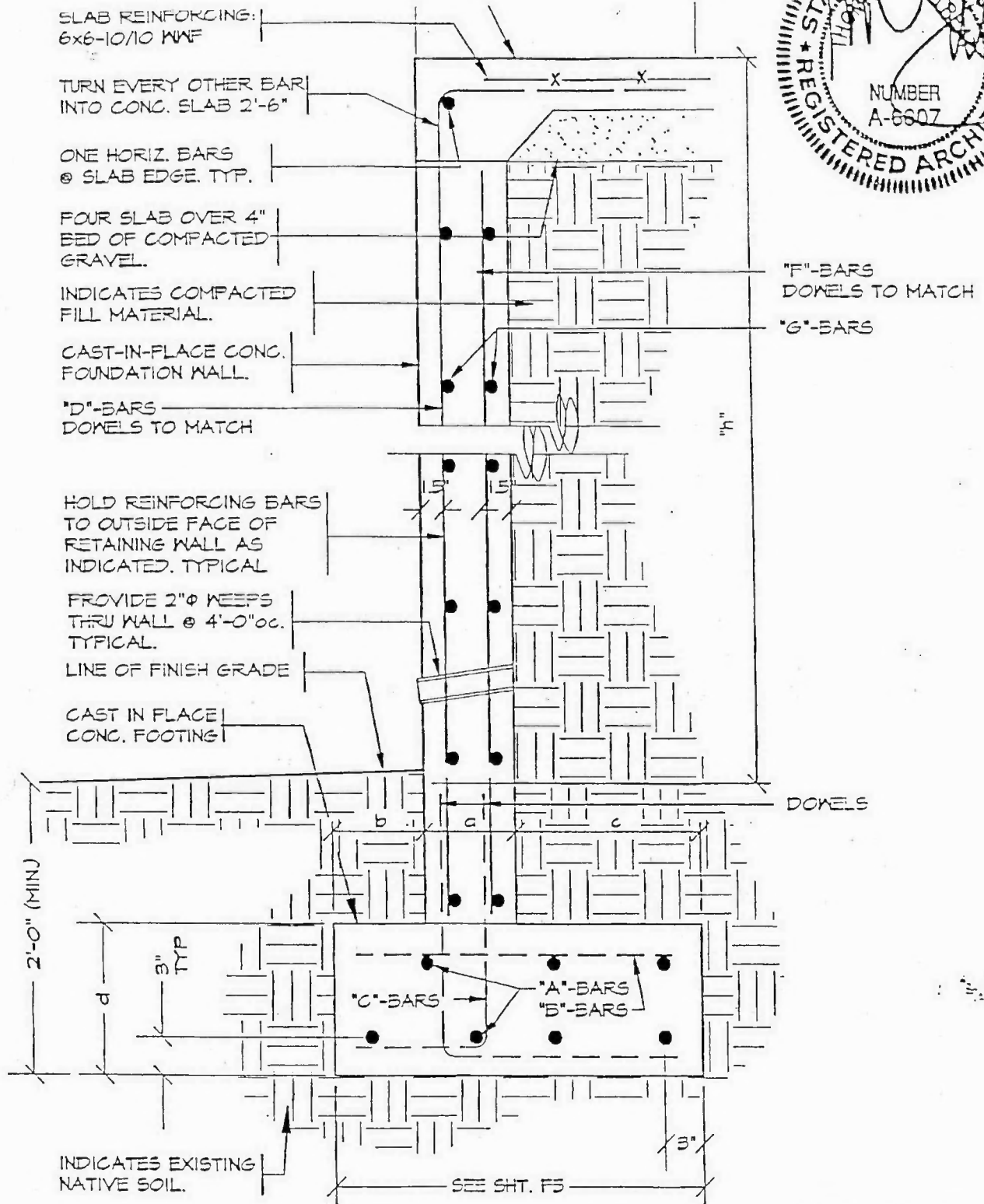
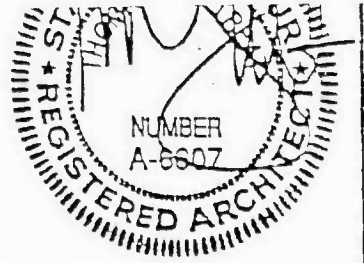
Drawing: **FOUNDATION WALL DETAILS**

Date: **4/12/00**

Sheet

F 2

of Sheets



DETAIL: TYPICAL RETAINING WALL WITH TOP SLAB- AND FOOTING
 SCALE: 1" = 1'-0"

Appendix B

© TREAT ARCHITECTS 2000

TREAT ARCHITECTS, P.C.
 114 Eagles Landing Drive
 Branson, Missouri 65616
 417-336-2015 Fax 336-2016

Project: **STONEBRIDGE VILLAGE**
 Drawing: **RETAINING WALL DETAILS**
 Date: **4/12/00**

Sheet
F3
 of Sheets

2 X FLOOR JOISTS

2" ϕ A. B. @ 4' o.c.

3"x3"x3/8" BRICK SUPPORT
FASTEN TO CONC. WALL WITH
5/8" ϕ KWIK-BOLTS @ 24" o.c.

CAST-IN-PLACE CONC.
FOUNDATION WALL.
CENTER ON FOOTING.

"D"-BARS

"E"-BARS
DOWELS TO MATCH

1 1/2" POLYSTYRENE
PROTECTION BOARD OVER
HOT MOP DAMPROOFING
ON OUTSIDE FACE OF
EXTERIOR WALLS. TYP.

1/2" EXP. JOINT MATERIAL

LINE OF CONC. SLAB

CAST IN PLACE
CONC. FOOTING

COMPACTED
GRAVEL BED

INDICATES EXISTING
NATIVE SOIL.

SEE SHT. F3

SLOPE

FREE-DRAINING GRAVEL

"G" BARS
DOWELS TO MATCH

PROVIDE 4" ϕ FDN.
DRAINS TO DAYLIGHT
TYPICAL.

COVE

DOWELS

"A"-BARS



DETAIL: TYPICAL BASEMENT WALL

SCALE: 1" = 1'-0"

Appendix B

© TREAT ARCHITECTS 2000

TREAT ARCHITECTS, P.C.

114 Eagles Landing Drive
Branson, Missouri 65616
417-336-2015 Fax 336-2016

Project: **STONEBRIDGE
VILLAGE**

Drawing: **BASEMENT
WALL DETAILS**

Date: **4/12/00**

Sheet

F 4

of Sheets

RETAINING WALL SCHEDULE

MAX HT. "h"	THICKNESS "a"	DIMENSIONS			A-BARS	B-BARS	D-BARS	F-BARS	G-BARS
		b	c	d					
UP TO 5'-0"	8"	1'-0"	2'-4"	1'-0"	#4 @ 12"oc	#4 @ 12"oc	#4 @ 24"oc	#4 @ 18"oc	#4 @ 24"oc
8'-0"	10"	1'-0"	4'-0"	1'-0"	#4 @ 12"oc	#4 @ 9"oc	#4 @ 36"oc	#5 @ 12"oc	#4 @ 12"oc
8'-0"	12"	1'-0"	4'-0"	1'-0"	#4 @ 12"oc	#4 @ 9"oc	#4 @ 36"oc	#4 @ 9"oc	#4 @ 12"oc

NOTES:

CONCRETE MIX, 3500 PSI
EQUIVALENT FLUID PRESSURE, 50 PCF
SURCHARGE, 100 PSF

ASSUMED BEARING PRESSURE, 3000 PSF
WALLS IN EXCESS OF 8' TALL SHALL BE
ENGINEERED FOR SPECIFIC SITE CONDITIONS.

BASEMENT WALL SCHEDULE

MAX HT. "h"	THICKNESS "a"	DIMENSIONS			A-BARS	D-BARS	E-BARS	G-BARS
		b	a	c				
UP TO 5'-0"	8"	0'-8"	0'-8"	0'-8"	#4 @ 9"oc	#4 @ 12"oc	#4 @ 24"oc	#4 @ 36"oc
8'-0"	8"	0'-8"	0'-8"	0'-8"	#4 @ 9"oc	#4 @ 6"oc	#4 @ 24"oc	#4 @ 36"oc
8'-0"	10"	0'-8"	0'-10"	0'-8"	#4 @ 9"oc	#5 @ 12"oc	#4 @ 18"oc	#4 @ 36"oc

NOTES:

CONCRETE MIX, 3500 PSI
EQUIVALENT FLUID PRESSURE, 50 PCF
SURCHARGE, 100 PSF

ASSUMED BEARING PRESSURE, 3000 PSF
WALLS IN EXCESS OF 8' TALL SHALL BE
ENGINEERED FOR SPECIFIC SITE CONDITIONS.



DETAIL: WALL & FOOTING SCHEDULES

TREAT ARCHITECTS, P.C.

114 Eagles Landing Drive
Branson, Missouri 65616
417-336-2015 Fax 336-2016

Project: **STONEBRIDGE VILLAGE**

Drawing: **FOUNDATION & RETAINING WALL SCHEDULES**

Date: **4/12/00**

Appendix B

Sheet

PS

of Sheets

© TREAT ARCHITECTS 2000